



**OUTPUT CHARACTERISTICS**

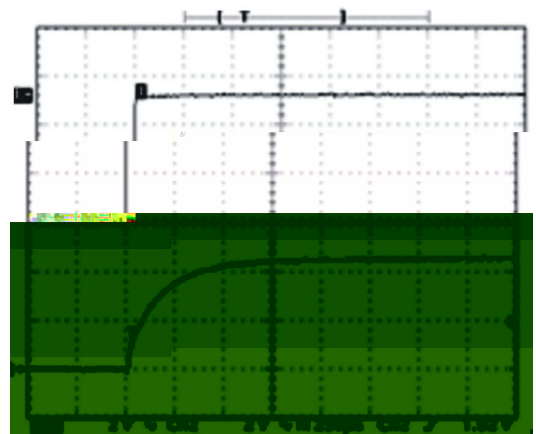
Parameter	Conditions	Min.	Typ.	Max.	Units
	°C °C				

**Capacitive loading and start up**

Typical start up times for this series, with a typical input voltage rise time of 2.2s and output capacitance of 10F, are saw in the table below. The product series will start into a capacitance of 47F with an increased start time, however, the maximum recommended output capacitances 10F

Typical Start-Up Wave Form

	μs



**Isolation Characteristics**

Parameter	Conditions	Min.	Typ.	Max.	Units

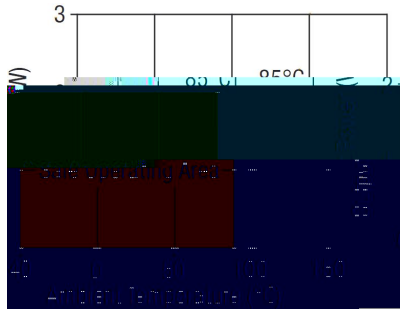
**General Characteristics**

Parameter	Conditions	Min.	Typ.	Max.	Units

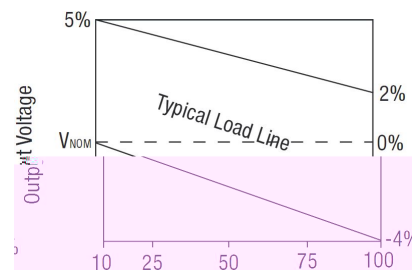
**Temperature Characteristics**

Parameter	Conditions	Min.	Typ.	Max.	Units
					°C

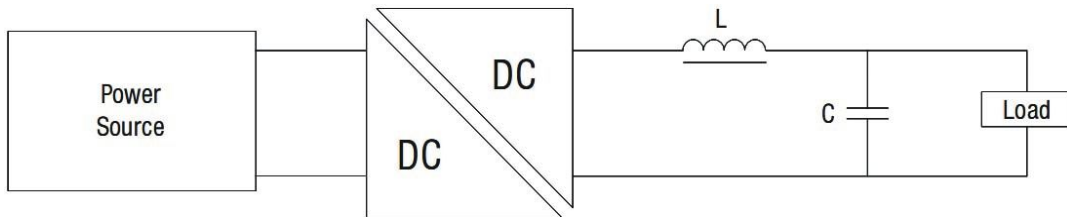
### Temperature derating graph



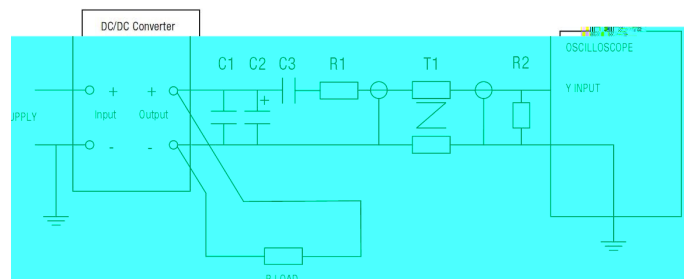
### Tolerance envelope



### OUTPUT RIPPLE REDUCTION



	$\mu$	
	$\mu$	$\Omega$
	$\Omega$	$\pm$
	$\Omega$	



Technical notes

PACKAGE SPECIFICATIONS

MECHANICAL DIMENSIONS	
SIP Package	DIP Package
±     ± ±	

FOOTPRINT SIP7		FOOTPRINT DIP14	
PIN		PIN	

TUBE OUTLINE DIMENSIONS

