

OUTPUT CHARACTERISTICS

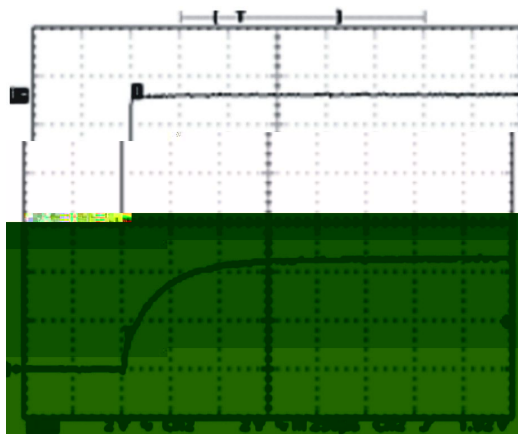
Parameter	Conditions	Min.	Typ.	Max.	Units
	°C °C				

Capacitive loading and start up

Typical start up times for this series, with a typical input voltage rise time of 2.2s and output capacitance of 10F, are saw in the table below. The product series will start into a capacitance of 47F with an increased start time, however, the maximum recommended output capacitances 10F

Typical Start-Up Wave Form

	μs



Isolation Characteristics

Parameter	Conditions	Min.	Typ.	Max.	Units

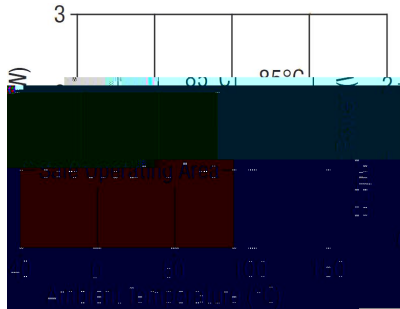
General Characteristics

Parameter	Conditions	Min.	Typ.	Max.	Units

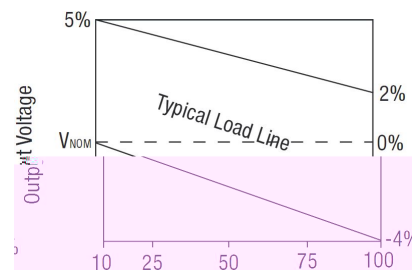
Temperature Characteristics

Parameter	Conditions	Min.	Typ.	Max.	Units
					°C

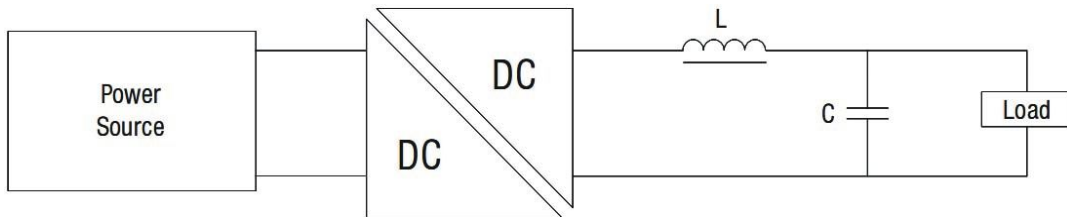
Temperature derating graph



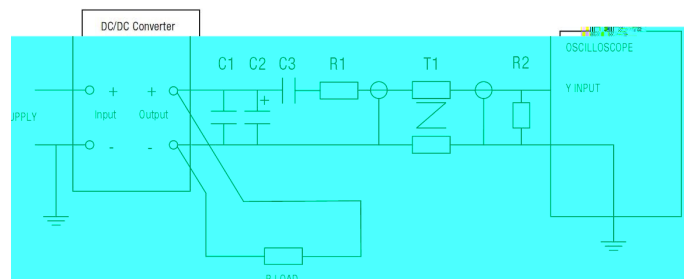
Tolerance envelope



OUTPUT RIPPLE REDUCTION



	μ	
	μ	Ω
	Ω	\pm
	Ω	



Technical notes

PACKAGE SPECIFICATIONS

MECHANICAL DIMENSIONS	
SIP Package	DIP Package
± ± ±	

FOOTPRINT SIP7		FOOTPRINT DIP14	
PIN		PIN	

TUBE OUTLINE DIMENSIONS

