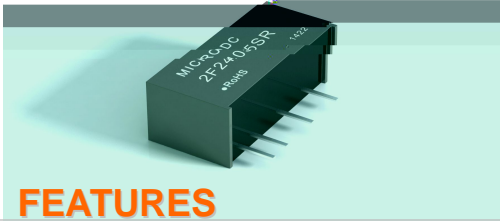


FIXED INPUT, ISOLATED & REGULATED Single Output DC/DC Converter



FEATURES

- ◆ _____
- ◆ _____
- ◆ _____
- ◆ _____
- ◆ _____
- ◆ _____
- ◆ _____
- ◆ _____
- ◆ _____
- ◆ _____
- ◆ _____
- ◆ _____
- ◆ _____
- ◆ _____
- ◆ _____
- ◆ _____
- ◆ _____
- ◆ _____
- ◆ _____

SELECTION GUIDE

NOTICE: add Suffix "P" for Continuous Short Circuit Protection, e.g. IF0505XSP

ISOLATION SPECIFICATIONS

MODEL SELECTION

2F^①05^②05^③X^④S^⑤R^⑥

- ① Product Series
- ② Input Voltage
- ③ Output Voltage
- ④ Fixed Input
- ⑤ SIP Package
- ⑥ Regulated output

DESCRIPTION

OUTPUT SPECIFICATIONS

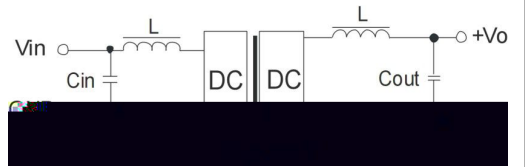


CE REACH
MICRODC RESERVES THE COPYRIGHT

TEMPERATURE CHARACTERISTICS

TEMPERATURE CHARACTERISTICS					

Recommended circuit



EXTERNAL CAPACITOR TABLE (TABLE 1)

V_{in}	C_{in}	V_{out}	C_{out}
	μ		μ

Overload Protection

Input Over-voltage Protection Circuit

