



FEATURES

- ◆RoHS compliant
- ◆Efficiency up to 86%
- ◆SIP/DIP Package
- ◆Wide temperature performance at full
1 Watt load, -40°C to 85°C
- ◆UL 94V-0 package material
- ◆No heatsink required
- ◆Low ripple and good EMC Features
- ◆Industry standard pinout
- ◆Power sharing on output
- ◆3KVDC isolation
- ◆Continuous Short Circuit Protection
- ◆Internal SMD construction
- ◆No external components required
- ◆Good dynamic feature

MODEL SELECTION

IF^①05^②05^③X^④S^⑤-1W^⑥

- ① Product Series
- ② Input Voltage
- ③ Output Voltage
- ④ Fixed Input
- ⑤ SIP Package
- ⑥ Rated Power

DESCRIPTION

The IF_XS-1W&IF_XD-1W series are specially designed for applications where a group of polar power supplies are isolated from the input power supply in a distributed power supply system on a circuit board.

These products apply to:

- 1) where the voltage of the input power supply is fixed (voltage variat
- 2) where isolation is necessary between input
- 3) where the regulation of the output voltage and the output ripple noise are demanded.



CE REACH

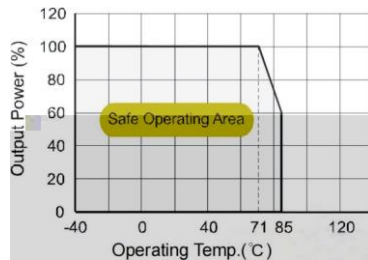
A							
Order code	Input		Output			Efficiency (% Typ)	Switching Frequency (KHz Typ)
	Voltage(VDC)		Voltage (VDC)	Current(MA)			
	Nominal	Range		Max	Min		
IF0505XS-W75	5	4.75-5.25	5	150	15	68	83
IF0505XS-1W	5	4.75-5.25	5	200	20	66	83
IF0509XS-1W	5	4.75-5.25	9	111	12	70	83
IF0512XS-1W	5	4.75-5.25	12	83	9	72	83
IF0515XS-1W	5	4.75-5.25	15	67	7	73	250
IF1205XS-W75	12	11.4-12.6	5	150	15	68	100
IF1205XS-1W	12	11.4-12.6	5	200	20	67	83
IF1209XS-1W	12	11.4-12.6	9	111	12	71	83
IF1212XS-1W	12	11.4-12.6	12	83	9	73	83
IF1215XS-1W	12	11.4-12.6	15	67	7	74	83
IF2405XS-W75	24	22.8-25.2	5	150	15	68	83
IF2405XS-1W	24	22.8-25.2	5	200	20	67	83
IF2409XS-1W	24	22.8-25.2	9	111	12	72	83
IF2412XS-1W	24	22.8-25.2	12	83	9	73	83
IF2415XS-1W	24	22.8-25.2	15	67	7	74	300
IF0505XD-W75	5	4.75-5.25	5	150	15	68	83
IF0505XD-1W	5	4.75-5.25	5	200	20	66	83
IF0509XD-1W	5	4.75-5.25	9	111	12	70	83
IF0512XD-1W	5	4.75-5.25	12	83	9	72	83
IF0515XD-1W	5	4.75-5.25	15	67	7	73	250
IF1205XD-W75	12	11.4-12.6	5	150	15	68	100
IF1205XD-1W	12	11.4-12.6	5	200	20	67	83
IF1209XD-1W	12	11.4-12.6	9	111	12	71	83
IF1212XD-1W	12	11.4-12.6	12	83	9	73	83
IF1215XD-1W	12	11.4-12.6	15	67	7	74	83
IF2405XD-W75	24	22.8-25.2	5	150	15	68	83
IF2405XD-1W	24	22.8-25.2	5	200	20	67	83
IF2409XD-1W	24	22.8-25.2	9	111	12	72	83
IF2412XD-1W	24	22.8-25.2	12	83	9	73	83
IF2415XD-1W	24	22.8-25.2	15	67	7	74	300

C		C		A			
Parameter	Test conditions			Min	Typ.	Max.	Units
Output power	Line reguleW* ref*8 82.05 1			0.1		1	W

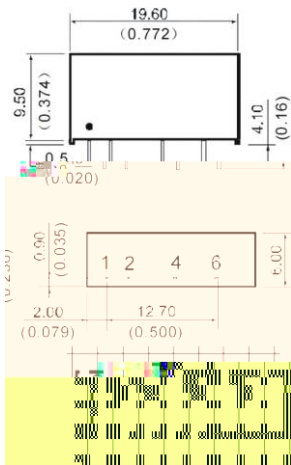
Parameter	Conditions	Min.	Typ.	Max.	Units
Storage humidity range				95	%
NO-load power consumption					°C
Operating temperature		-40		85	°C
Storage temperature		-55		125	°C
Lead temperature	1.5mm from case for 10 seconds		15	300	
Temp.rise at full load				25	°C
Cooling	Free air convection				
Case material	Plastic(UL94-V0)				
Short circuit protection	IF(XX)05X(S)D-1W	Continuous			
	Others			1'	s
MTBF		3500			K hours
Weight			5.2		g

*Supply voltage must be discontinued at the end of short circuit duration.

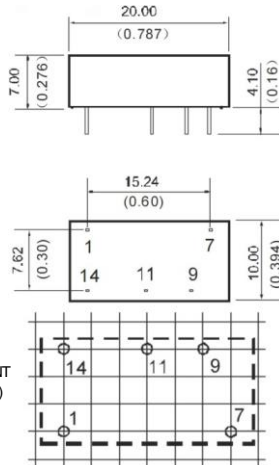
Temperature Derating Graph



IF-XS-1W SIP SIZE Graph IF-XD-1W DIP



RECOMMENDED FOOTPRINT
Top view, grid: 2.54mm(0.1inch)
diameter: 1.00mm(0.039inch)



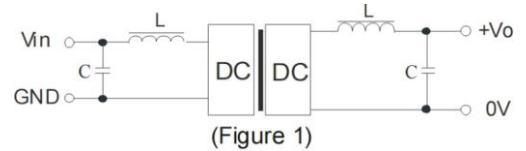
Pin	Function
1	Vin
2	GND
4	0V
6	+V0

Note:
Unit: mm (inch)
Pin section: 0.50*0.3mm(0.020*0.012inch)
Pin section tolerances: 0.10mm(0.004inch)
General tolerances: 0.25mm(0.010inch)

Pin	Function
1	GND
7	NC
9	+V0
11	0V
14	Vin

Filtering

To get an extreme low ripple, an "LC" filtering network may be connected to the input and output ends of the DC/DC converter. Which may produce a more significant filtering effect. It should also be noted that the inductance and the frequency of the "LC" filtering network should be staggered with the DC/DC frequency to avoid mutual interference see (Figure 1).



In some circuits which are sensitive to noise and ripple, a filtering capacitor may be added to the DC/DC output end and input end to reduce the noise and ripple. However, the capacitance of the output filter capacitor must be proper. If the capacitance is too big, a startup problem might arise. For every channel of output, provided the safe and reliable operation is ensured, the greatest capacitance of its filter capacitor sees (Table 1).

EXTERNAL CAPACITOR TABLE (TABLE 1)

(VDC)	(μF)	(VDC)	(μF)
5	4.7	5	10
12	2.2	9	4.7
24	1.0	12	2.2
-	-	15	1.0

It's not recommend to connect any external capacitor in the application field with less than 0.5 watt output.

Overload Protection

Under normal operating conditions, the output circuit of these products has no protection against over-current and short-circuits. The simplest method is to connect a self-recovery fuse in series at the input end or add a circuit breaker to the circuit.

Requirement On Output Load

To ensure this module can operate efficiently and reliably, a minimum load is specified for this kind of DC/DC converter in addition to a maximum load (namely full load). During operation, make sure the specified range of input voltage is not exceeded, the minimum output load is not less than 10% of the full load, and that this product should never be operated under no load! If the actual output power is very small, please connect a resistor with proper resistance at the output end in parallel to increase the load, or use our company's products with a lower rated output power (IF_S(D)-W25 Series).

When the environment temperature is higher than 71°C, the product output power should be less than 60% of the rated power.

No parallel connection or plug and play.

Use dual output simultaneously, forbid opening output pin (0V) to use as single output.