

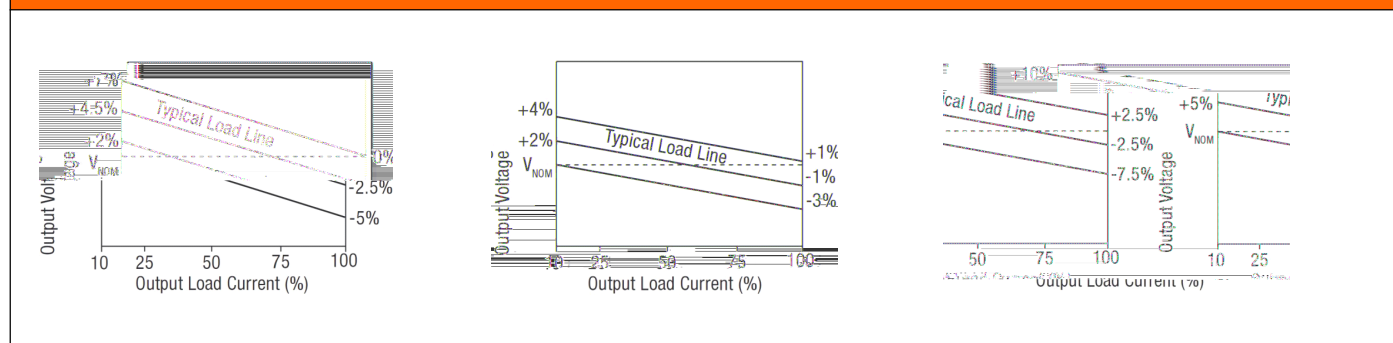
OUTPUT CHARACTERISTICS

Isolation Characteristics

General Characteristics

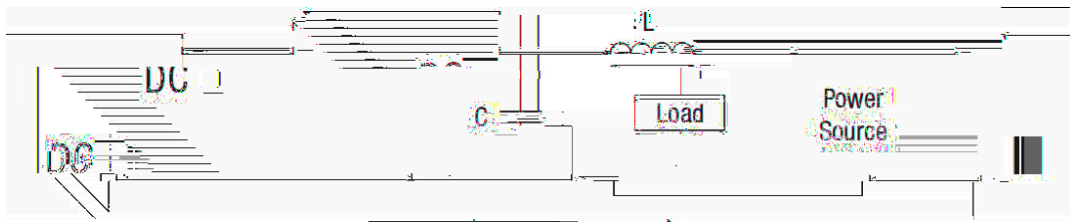
Temperature Characteristics

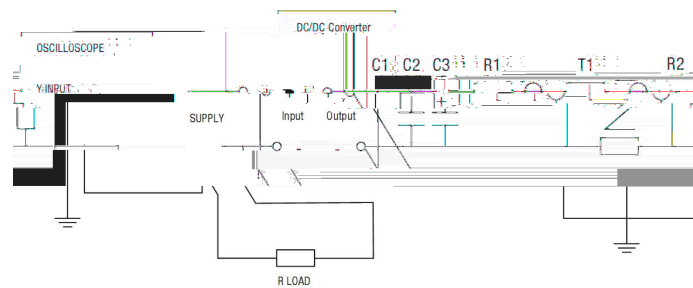
TOLERANCE ENVELOPE



Technical notes

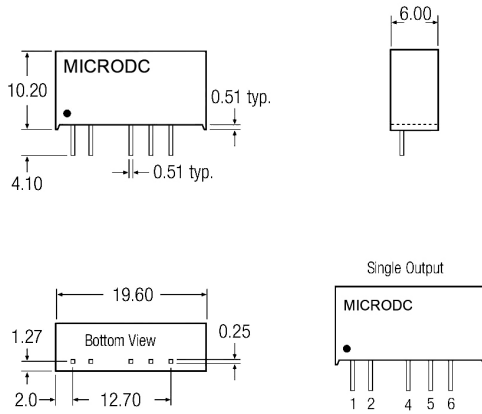
OUTPUT RIPPLE REDUCTION





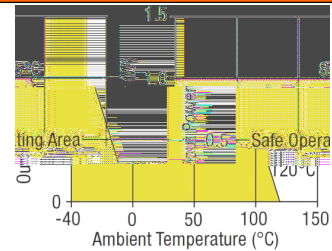
PACKAGE SPECIFICATIONS

MECHANICAL DIMENSIONS

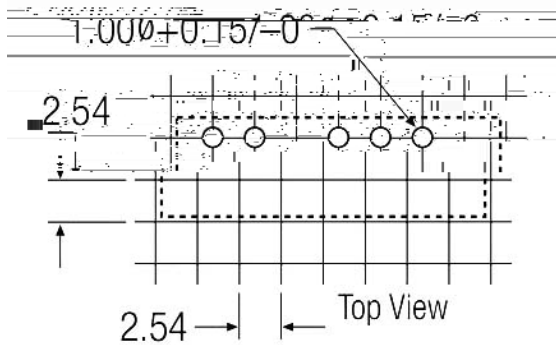


FOOTPRINT DETAILS

TEMPERATURE DERATING GRAPHS

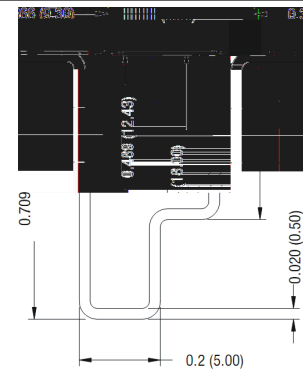


RECOMMENDED FOOTPRINT DETAILS



All dimensions in inches ± 0.01 (mm ± 0.25 mm).

TUBE OUTLINE DIMENSIONS



RoHS COMPLIANT INFORMATION

This series is compatible with RoHS soldering systems with a peak wave solder temperature of 300°C for 10 seconds. The pin termination finish on the SIP package type is Tin Plate, Hot Dipped over Matte Tin with Nickel Preplate. The DIP types are Matte Tin over Nickel Preplate. Both types in this series are backward compatible with Sn/Pb soldering systems.

REACH COMPLIANT INFORMATION

This series has proven that this product does not contain harmful chemicals, it also has harmful chemical substances through the registration, inspection and approval.