

Model	Input Voltage (V)	Output Voltage (V)	Output Current (A)	Output Power (W)	Efficiency (%)	MTTF <sup>1</sup> (Khrs)
D0505001W	5	5	3.3	100	70	1615
D0505002W	5	5	5	100	70	1615
D0505003W	5	5	9	100	70	669
D0505004W	5	5	12	100	70	339
D0505005W	5	5	15	100	70	187
D0505006W	5	5	3.3	100	70	1615
D0505007W	5	5	5	100	70	1615
D0505008W	5	5	9	100	70	669
D0505009W	5	5	12	100	70	339
D0505010W	5	5	15	100	70	187
D0505011W	5	5	3.3	100	70	1615
D0505012W	5	5	5	100	70	1615
D0505013W	5	5	9	100	70	669
D0505014W	5	5	12	100	70	339
D0505015W	5	5	15	100	70	187
D0505016W	5	5	3.3	100	70	1615
D0505017W	5	5	5	100	70	1615
D0505018W	5	5	9	100	70	669
D0505019W	5	5	12	100	70	339
D0505020W	5	5	15	100	70	187
D0505021W	5	5	3.3	100	70	1615
D0505022W	5	5	5	100	70	1615
D0505023W	5	5	9	100	70	669
D0505024W	5	5	12	100	70	339
D0505025W	5	5	15	100	70	187
D0505026W	5	5	3.3	100	70	1615
D0505027W	5	5	5	100	70	1615
D0505028W	5	5	9	100	70	669
D0505029W	5	5	12	100	70	339
D0505030W	5	5	15	100	70	187

**OUTPUT CHARACTERISTICS**

Pa a	C	M .	T .	Ma .	U
Ra P	TA=-40°C 120°C			1	W
V a S P A a	S a				
L a	D050503X(\$D (H V V )		1.0	1.25	%%
	A a a (H V V )		1.0	1.20	%%
L a a 2	10% a a a ,33V			15	%
	10% a a a ,5V			15	%
	10% a a a ,9V			10	%
	10% a a a ,12V			10	%
	10% a a a ,15V			10	%
R a N	BW=DC 20MH ,A			75	V -

**ISOLATION CHARACTERISTICS**

Pa a	C	M .	T .	Ma .	U
I a a	Fa 1	1000			VDC
R a	V =500VDC	1			G

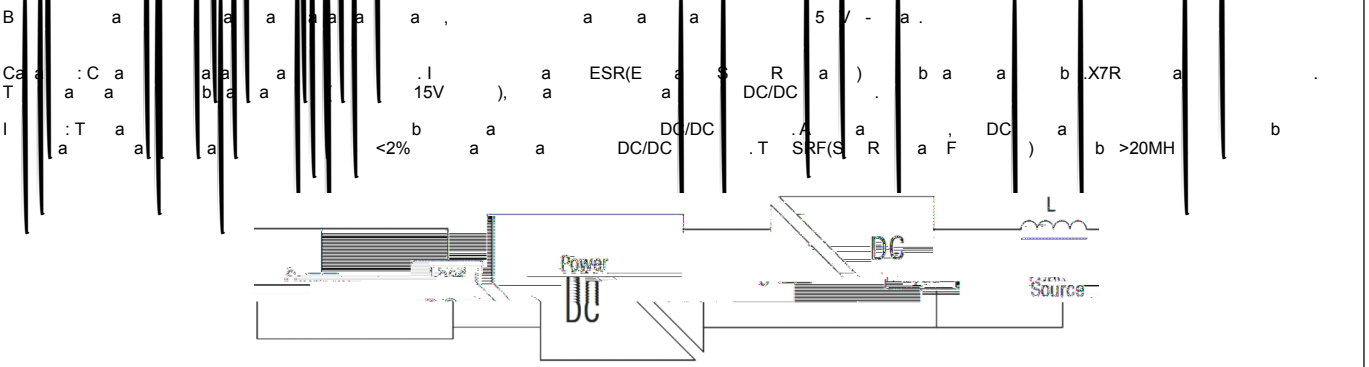
**GENERAL CHARACTERISTICS**

Pa a

### TECHNICAL NOTES

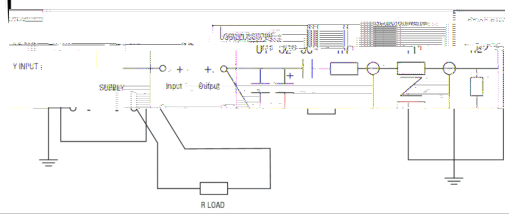
The D-X(S)D DC/DC converter is a high efficiency, low ripple, wide load regulation converter. It is designed for applications requiring a regulated output voltage over a wide range of input voltages and load currents. The converter is available in two versions: SELV (Safety Extra Low Voltage) and non-SELV. The SELV version is designed for applications where the output voltage is less than 24VDC. The non-SELV version is designed for applications where the output voltage is greater than 24VDC. The converter is rated for a maximum output current of 1A and a maximum output power of 1W. The input voltage range is 5V to 15VDC. The output voltage is regulated to within  $\pm 1\%$  over the full load range. The ripple voltage is less than 2% of the output voltage. The load regulation is better than 0.1%. The converter is designed for operation at a switching frequency of 100kHz. The efficiency is greater than 85%. The converter is designed for operation at a temperature range of -40°C to 85°C. The converter is designed for operation at a relative humidity of up to 90%. The converter is designed for operation at a maximum altitude of 2000m.

### OUTPUT RIPPLE REDUCTION

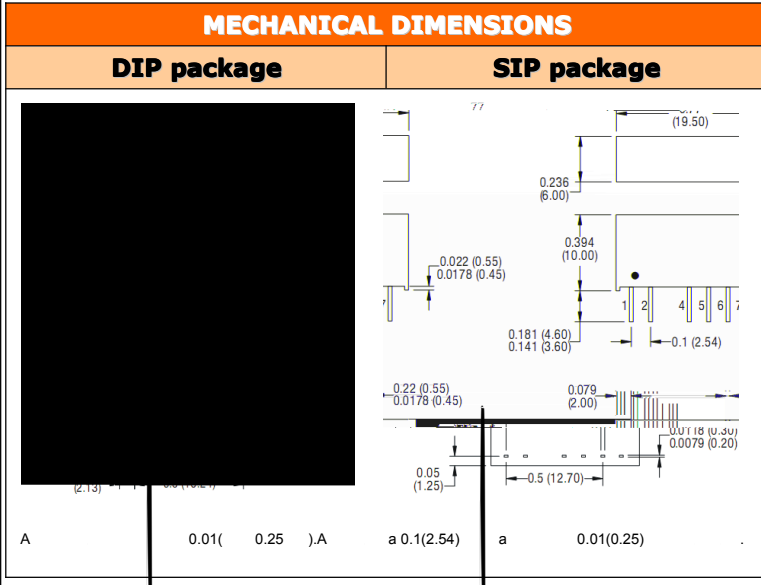


### OUTPUT RIPPLE REDUCTION

Component	Value	Notes
C1	1F X7R	DC/DC
C2	10F	ESR < 100mΩ, 100kHz
C3	100F	
R1	450Ω	1%
R2	50Ω BNC	
T1	3T	
RLOAD	R	DC/DC



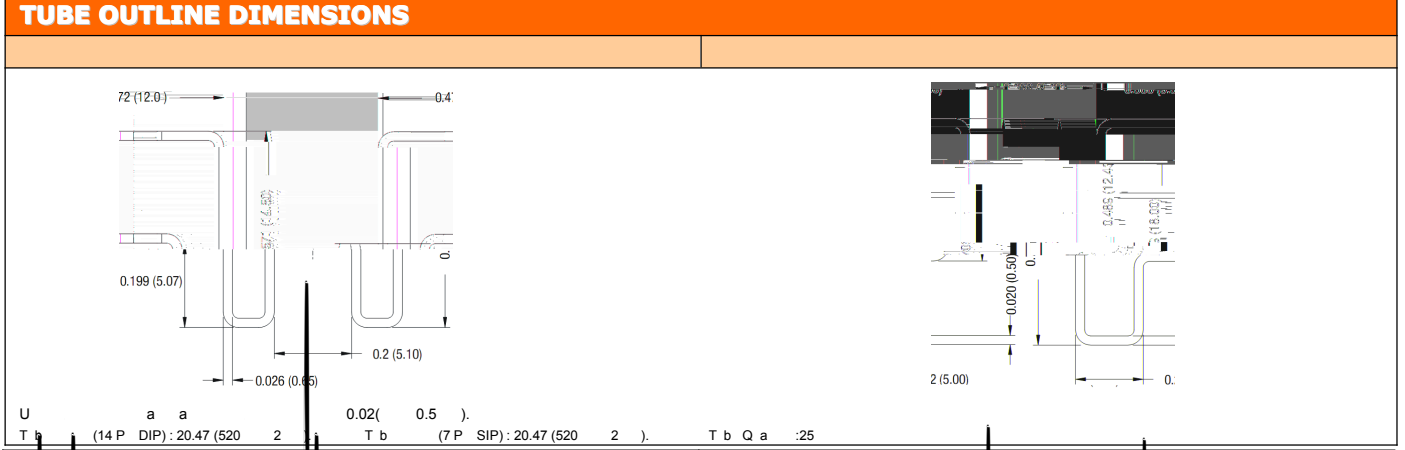
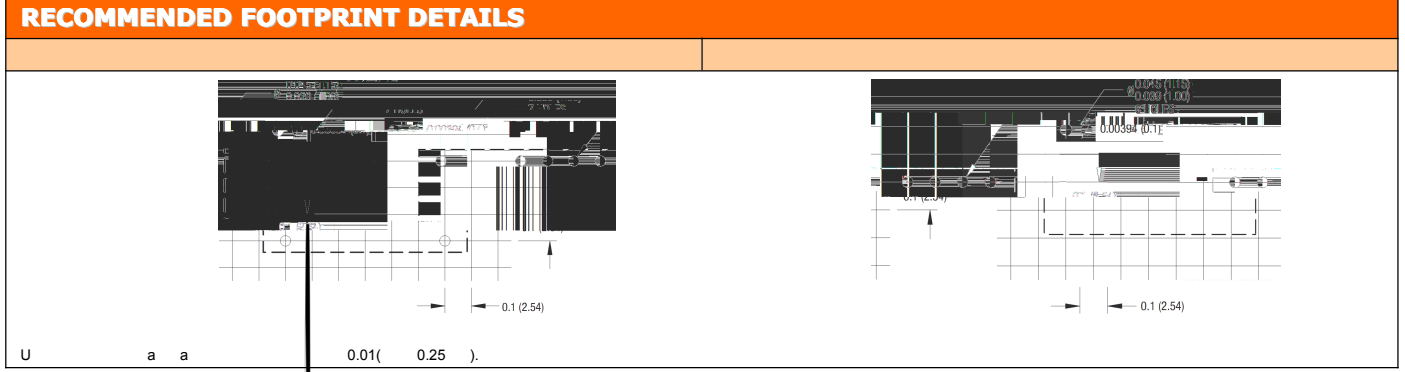
**PACKAGE SPECIFICATIONS**



**PIN CONNECTIONS**

PIN CONNECTIONS-14 PINDIP		PIN CONNECTIONS-7 PIN SIP	
1	-VIN	1	+VIN
7	NC	2	-VIN
8	-VOUT2	4	+VOUT1
9	+VOUT2	5	-VOUT1
10	-VOUT1	6	+VOUT2
11	+VOUT1	7	-VOUT2
14	+VIN		

NC - N a a ab a



0086-20-86000646 E-mail: @

© 2010 MICRODC

RoHS  
MICRODC Green Technology

REACH