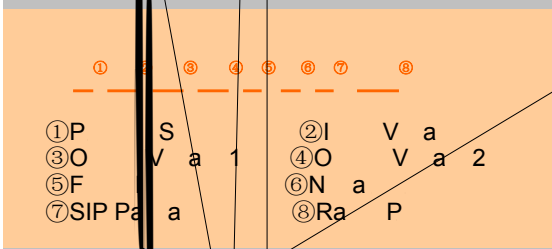


SELECTION GUIDE							
O	I V a (V)	O V a 1 (V)	O V a 2 (V)	O C 1 (MA)	O C 2 (MA)	E (%)	MTTF ¹ (KHRS)
D050503XND-1W	5	5	3.3	100	152	70	1615
D050505XND-1W	5	5	5	100	100	70	1615
D050509XND-1W	5	5	9	100	56	80	669
D050512XND-1W	5	5	12	100	42	80	339
D050515XND-1W	5	5	15	100	34	80	187
D050503XNS-1W	5	5	3.3	100	152	70	1615
D050505XNS-1W	5	5	5	100	100	70	1615
D050509XNS-1W	5	5	9	100	56	80	669
D050512XNS-1W	5	5	12	100	42	80	339
D050515XNS-1W	5	5	15	100	34	80	187
D120505XND-1W	12	5	5	100	100	70	489
D120509XND-1W	12	5	9	100	56	80	343
D120512XND-1W	12	5	12	100	42	80	229
D120515XND-1W	12	5	15	100	34	80	148
D120505XNS-1W	12	5	5	100	100	70	489
D120509XNS-1W	12	5	9	100	56	80	343
D120512XNS-1W	12	5	12	100	42	80	229
D120515XNS-1W	12	5	15	100	34	80	148
D240505XNS-1W	24	5	5	100	100	81	395
D240509XNS-1W	24	5	9	100	56	82	289
D240512XNS-1W	24	5	12	100	42	84	186
D240515XNS-1W	24	5	15	100	34	84	150
D240505XND-1W	24	5	5	100	100	81	395
D240509XND-1W	24	5	9	100	56	82	289
D240512XND-1W	24	5	12	100	42	84	186
D240515XND-1W	24	5	15	100	34	84	150



OUTPUT CHARACTERISTICS

Parameter	Condition	Min.	Typ.	Max.	Unit
Rated Power	TA=-40°C ~ 120°C			1	W
Load Regulation	D050503XN(S)D (H V V)		1.0	1.25	%%
Line Regulation	(H V V)		1.0	1.20	%%
Load Regulation	10% load, 3.3V			15	%
	10% load, 5V			15	%
	10% load, 9V			10	%
	10% load, 12V			10	%
	10% load, 15V			10	%
Bandwidth	BW=DC ~ 20MHz			75	V

ISOLATION CHARACTERISTICS

Parameter	Condition	Min.	Typ.	Max.	Unit
Isolation Voltage	Fa 1	1000			VDC
Resistance	V = 500VDC	1			G

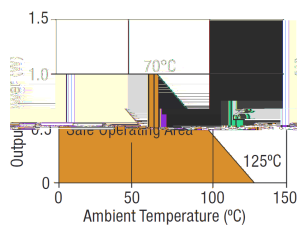
GENERAL CHARACTERISTICS

Parameter	Condition	Min.	Typ.	Max.	Unit
Storage Temperature	A		100		°C

TEMPERATURE CHARACTERISTICS

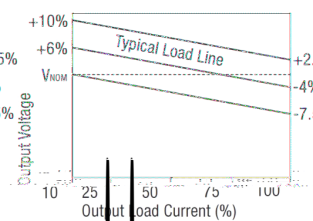
Parameter	Condition	Min.	Typ.	Max.	Unit
Storage Temperature	A	0		70	°C
Operating Temperature		-55		150	°C
Case Temperature	Fa				

TEMPERATURE DERATING GRAPH



TOLERANCE ENVELOPE

D-XN(S)D-1W



1.S
2.S
A

TA=25°C

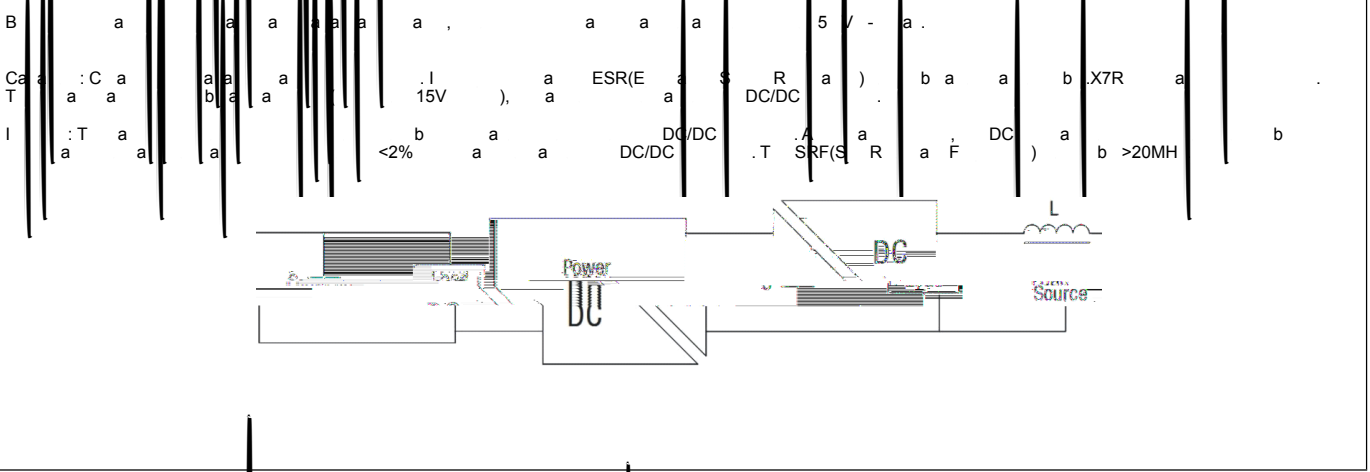
24V& 48V

O

TECHNICAL NOTES

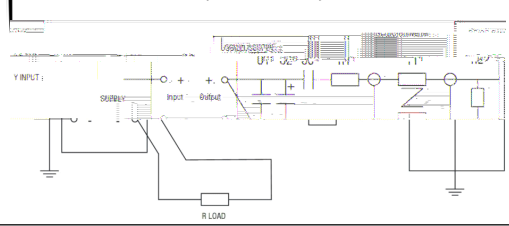
The input voltage range is 10V to 28V. The output voltage is adjustable from 0.5V to 28V. The output current is 1A. The power dissipation is 1W. The efficiency is 85%. The ripple voltage is 20mV. The load regulation is 0.1%. The line regulation is 0.1%. The temperature coefficient is 0.1%. The operating temperature range is -40°C to 85°C. The storage temperature range is -40°C to 125°C. The mounting hole diameter is 3.5mm. The module width is 12.5mm. The module height is 12.5mm. The module length is 50mm. The module weight is 1.5g.

OUTPUT RIPPLE REDUCTION



OUTPUT RIPPLE REDUCTION

Component	Value	Notes
C1	10µF X7R	Input capacitor
C2	100µF	Output capacitor
C3	100µF	Output capacitor
R1	450Ω	Feedback resistor
R2	50Ω BNC	Feedback resistor
T1	3T	Temperature sensor
RLOAD	R	Load resistor



PACKAGE SPECIFICATIONS

MECHANICAL DIMENSIONS		PIN CONNECTIONS																																	
		<table border="1"> <thead> <tr> <th colspan="2">PIN CONNECTIONS-14 PIN DIP</th> <th colspan="2">PIN CONNECTIONS-7 PIN SIP</th> </tr> </thead> <tbody> <tr> <td>1</td> <td>GND</td> <td>1</td> <td>+VIN</td> </tr> <tr> <td>7</td> <td>NC</td> <td>2</td> <td>GND</td> </tr> <tr> <td>8</td> <td>+VOUT2</td> <td>4</td> <td>-VOUT1</td> </tr> <tr> <td>9</td> <td>-VOUT2</td> <td>5</td> <td>+VOUT1</td> </tr> <tr> <td>10</td> <td>+VOUT1</td> <td>6</td> <td>-VOUT2</td> </tr> <tr> <td>11</td> <td>-VOUT1</td> <td>7</td> <td>+VOUT2</td> </tr> <tr> <td>14</td> <td>+VIN</td> <td></td> <td></td> </tr> </tbody> </table>		PIN CONNECTIONS-14 PIN DIP		PIN CONNECTIONS-7 PIN SIP		1	GND	1	+VIN	7	NC	2	GND	8	+VOUT2	4	-VOUT1	9	-VOUT2	5	+VOUT1	10	+VOUT1	6	-VOUT2	11	-VOUT1	7	+VOUT2	14	+VIN		
PIN CONNECTIONS-14 PIN DIP		PIN CONNECTIONS-7 PIN SIP																																	
1	GND	1	+VIN																																
7	NC	2	GND																																
8	+VOUT2	4	-VOUT1																																
9	-VOUT2	5	+VOUT1																																
10	+VOUT1	6	-VOUT2																																
11	-VOUT1	7	+VOUT2																																
14	+VIN																																		

RECOMMENDED FOOTPRINT DETAILS

TUBE OUTLINE DIMENSIONS

