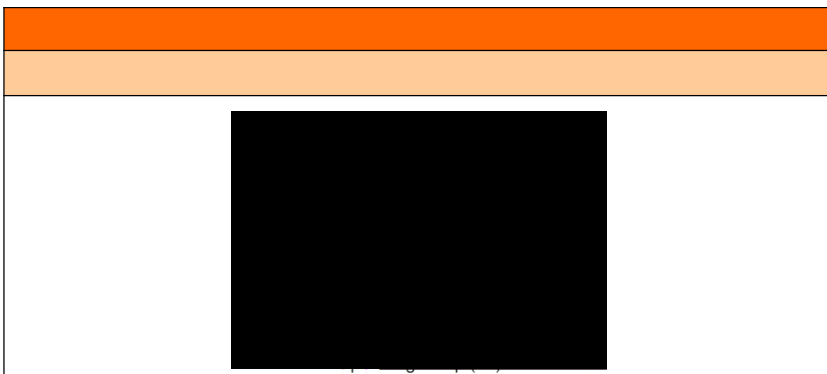


P	C	M	T	M	U
S				95	%
O		-40		85	C
S		-55		125	C
L	1.5 10			300	C
T			20	30	C
C		F			
C		P (UL94- 0)			
S	IA()05 S-1	C			
	O *			1	S
MTBF		3500			K
			5.2		

*S



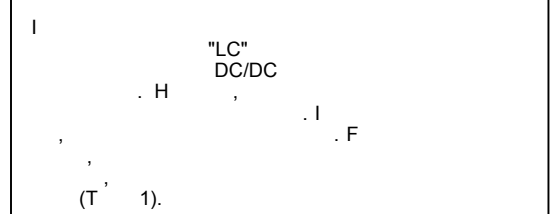
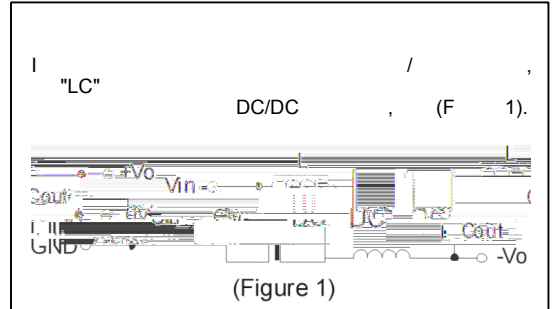
Dimensions:
 Pin pitch: 0.50 (0.0196)
 Pin width: 0.90 (0.0354)
 Pin height: 12.00 (0.4724)
 Pin diameter: 0.50 (0.0196)
 Pin length: 0.020 (0.0008)
 Module width: 27.50 (1.083)
 Module height: 9.50 (0.374)
 Pin 1 offset: 2.32 (0.091)
 Pin 10 offset: 2.54 (0.100)

RECOMMENDED FOOTPRINT

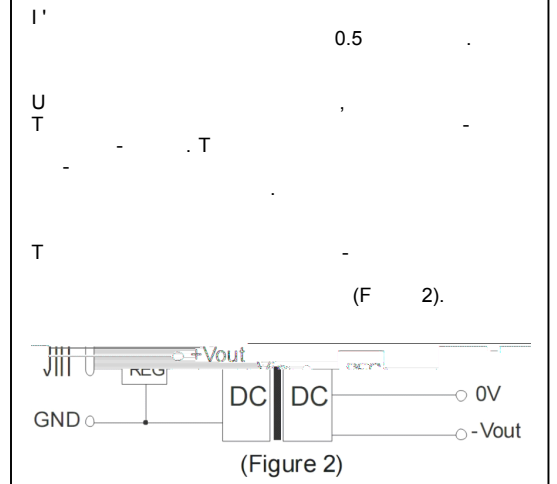
Pin 1: 2.54 (0.1)
 Pin 2: 1.00 (0.039)

Pin	Function
1	IN
2	GND
7	+ 0
9	- 0
10	0

Material: TA=25 C, 10%



Vin (DC)	Cin (F)	Vout (DC)	Cout (F)
5	4.7	5	4.7
12	2.2	9	2.2
24	0.47	12	1
-	-	15	0.47



60% 71

U (0)