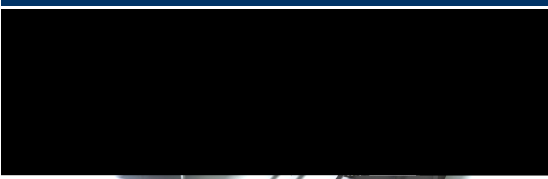




Professional Power Module

- -1 & - -1 Series

FIXED INPUT,ISOLATED & REGULATED Single Output DC/DC Converter



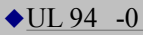
R HS

E 86%

SIP/DIP P



1 , -40 C 85 C



UL 94 -0



N



L EMC F



I



P



3K DC



C S C P



I SMD



N



G

^①0 ^②0 ^③ ^④ ^⑤-1 ^⑥

①P S

②I

③O

④F I

⑤SIPP

⑥R P



CE REACH

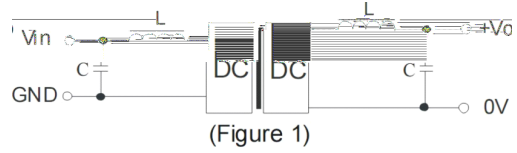


Professional Power Module

- -1 & - -1 Series

Filtering

Parameter	Conditions	Min.	T p.	Ma .	Units



IF-XS-1W SIP	SIZE Graph	IF-XD-1W DIP																							
<table border="1"> <thead> <tr> <th>Pin</th> <th>Function</th> </tr> </thead> <tbody> <tr><td> </td><td> </td></tr> <tr><td> </td><td> </td></tr> <tr><td> </td><td> </td></tr> <tr><td> </td><td> </td></tr> <tr><td> </td><td> </td></tr> </tbody> </table>	Pin	Function											<table border="1"> <thead> <tr> <th>Pin</th> <th>Function</th> </tr> </thead> <tbody> <tr><td> </td><td> </td></tr> <tr><td> </td><td> </td></tr> <tr><td> </td><td> </td></tr> <tr><td> </td><td> </td></tr> <tr><td> </td><td> </td></tr> </tbody> </table>	Pin	Function										
Pin	Function																								
Pin	Function																								

MICRODC
Professional Power Module



RoHS COMPLIANT INFORMATION



REACH COMPLIANT INFORMATION