

**C**

**B 12 05 - -1**

1 (2 1)

**C**

- -1

- 1) ( 2 1)
- 2) ( 1000 )
- 3)



**CE REACH**

**SELECTION GUIDE**

		( )		( )	( )	(%)		( )	
		0%	100%			100%			
0505	-1	5	25	320	05	200	0.5	2	21
0512	-1	5	30	300	12	3	3.5	2	111
0515	-1	5	20	320	15	2	0.5	3	
1205	-1	12	10	110	05	200	.0	3	12 1
1212	-1	12	12	130	12	3	5.0		11 5
1215	-1	12	15	120	15	2	5.0		12 3
2405	-1	24		120	05	200	5.0	0	13
2412	-1	24		20	12	3	5.0		12
2415	-1	24		20	15	2	5.0		1223

**COMMON SPECIFICATIONS**

	05 -1			10	
	12 -1			1.5	
	24 -1			40	
	1.5	10			245
				15	
					( 4- 0)
				30	
				-40	5
				-50	130

**INPUT CHARACTERISTICS**

	.5	4.5	5		
	.12		12	1	
	.24	1	24	3	
				12	-
	1.5	10			-
					-

ISOLATION SPECIFICATIONS					
	1	1	1000		
	500		1	10	
				25	

OUTPUT SPECIFICATIONS					
			0.1	1	
				$\pm 1$	$\pm 2$ %
	10%	100%		0.1	1 %
				0.2	1 %
			-10	$\pm 10$	%/
&	20			100	150 -
			50		00

### APPLICATION NOTE

**A**      **A**      &

-1      /      100%

1      1

-1      42.4      0

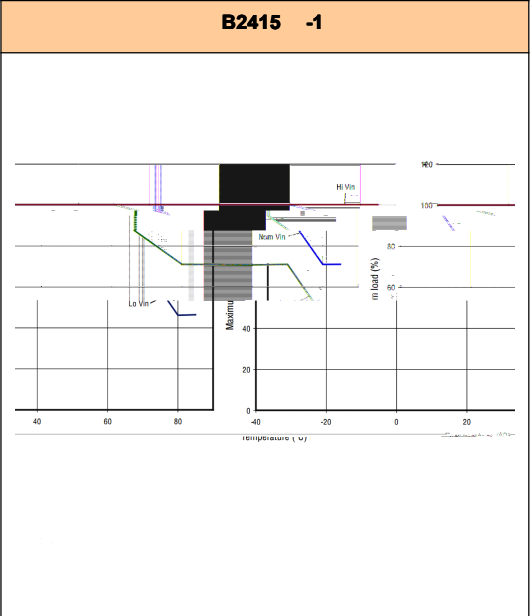
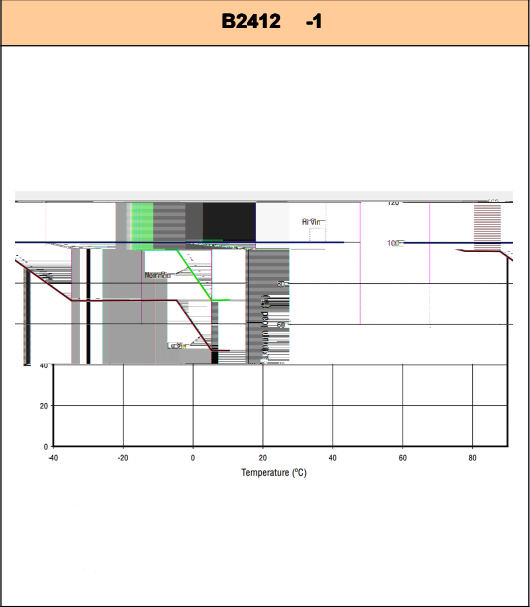
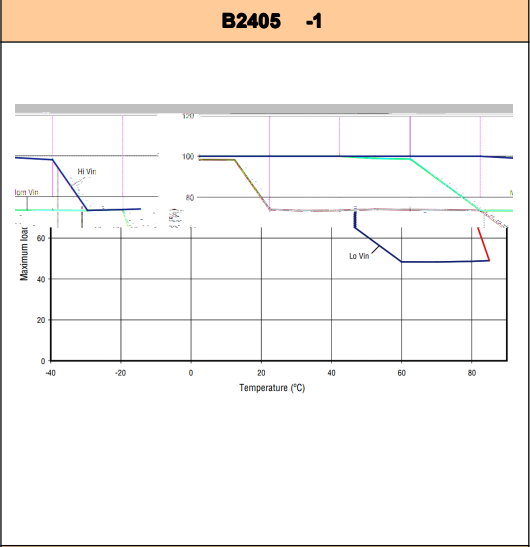
**A**      -      **A**      **A**

-1

(      )

20%

### TEMPERATURE DERATING



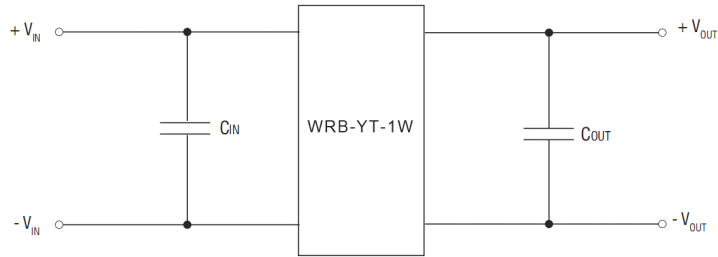


**APPLICATION NOTES**

&

10μ , 200	22μ , 1
-----------	---------

, 5 , 12 15



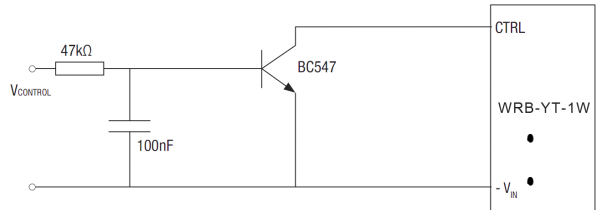
/

50

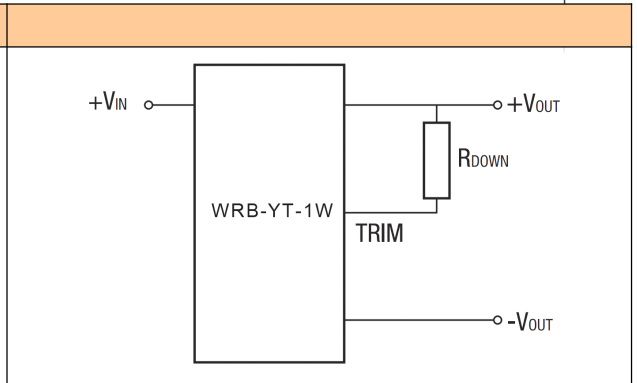
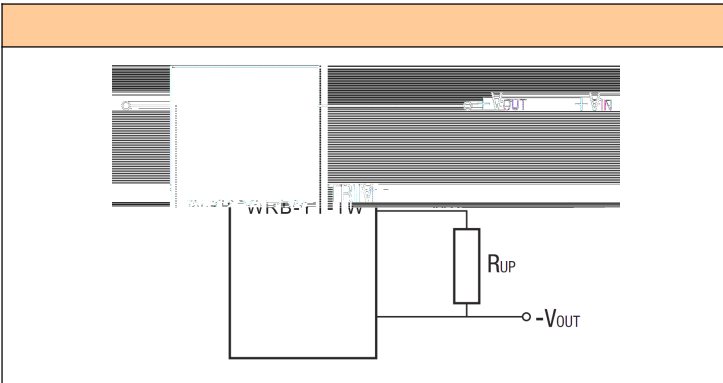
54

- 1 /

	0	0.2	
	1	30	

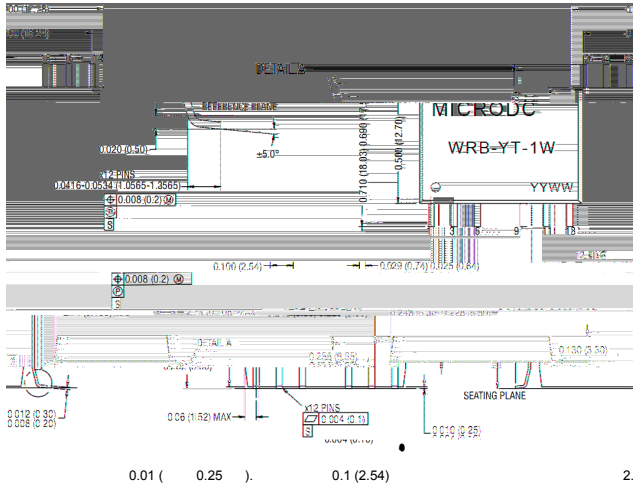


0505 -1	30100	1.24	3.
1205 -1 , 2405 -1	100000	1.24	3.
12 -1	3 300	2.5	.5
15 -1	4 00	2.5	12.5



**OUTLINE DIMENSIONS & FOOTPRINT DETAILS**

**MECHANICAL DIMENSIONS**

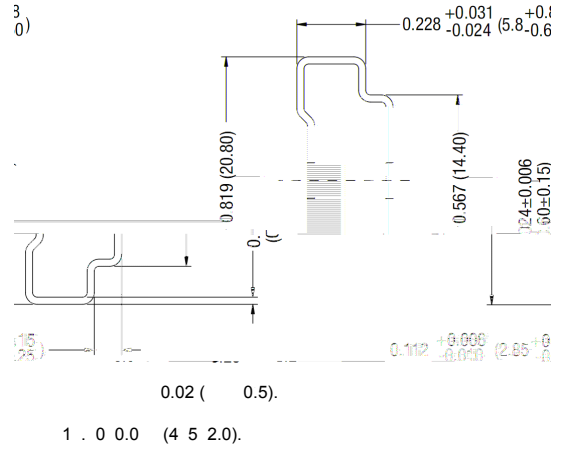
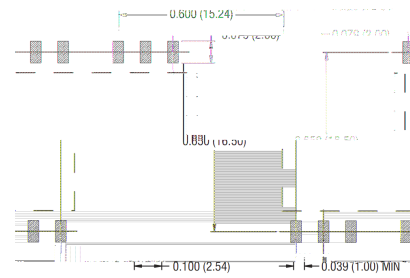


0.01 ( 0.25 ) . 0.1 (2.54) 2.

**FOOTPRINT DETAILS**

FOOTPRINT DETAILS			
1	-	1	
3	+	1	
5		1	
		22	/
11	-	2	
13	+	2	

**RECOMMENDED FOOTPRINT**



25

1. 10%,
2. 10%
- 3.
4. 25 , 5%,