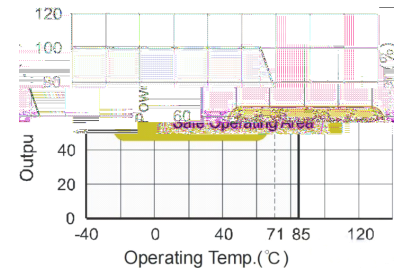




### EXTERNAL CAPACITOR TABLE

	( ' )	( ' )

### TYPICAL CHARACTERISTICS

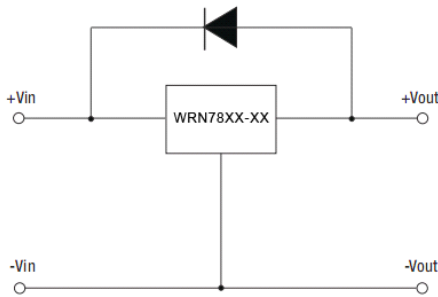


### OPTIONAL DIODE PROTECTION CIRCUIT

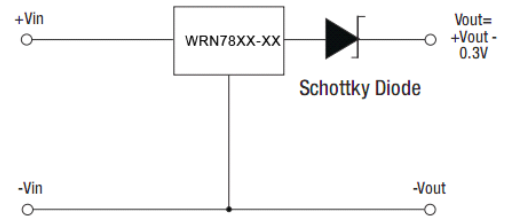
Add a blocking diode to Vout if current can flow backwards into the output, as this can damage the converter when it is powered down.

The diode can either be fitted across the device if the source is low impedance or fitted in series with the output (recommended).

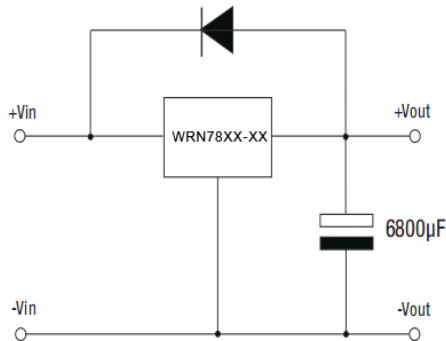
Optional Protection 1.



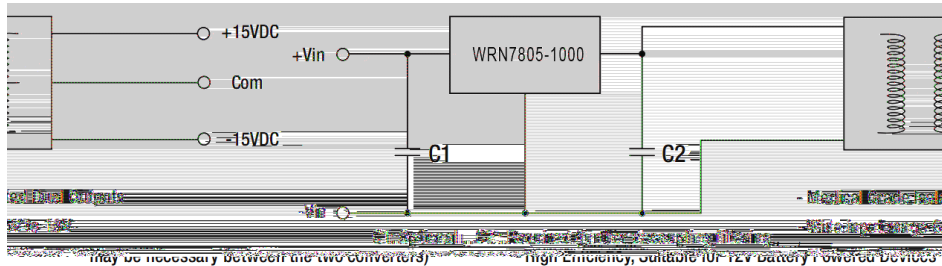
Optional Protection 2.



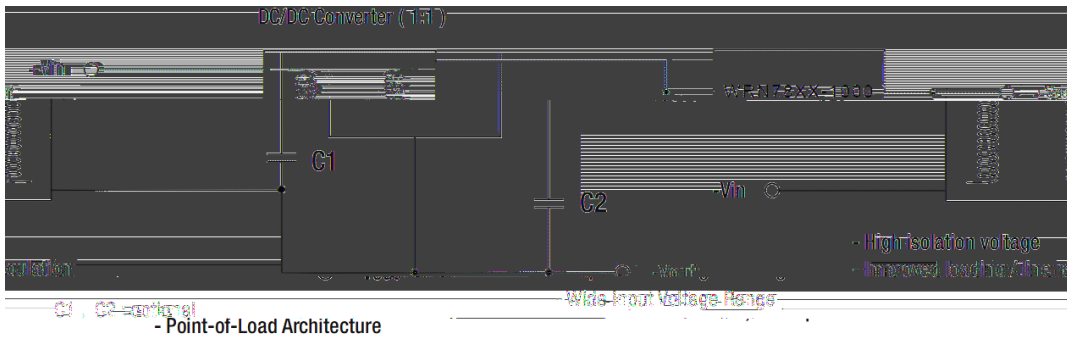
Application example:  
Driving a high capacitive load



### APPLICATION EXAMPLE

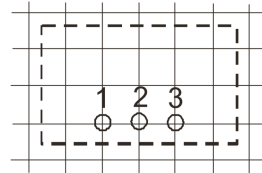
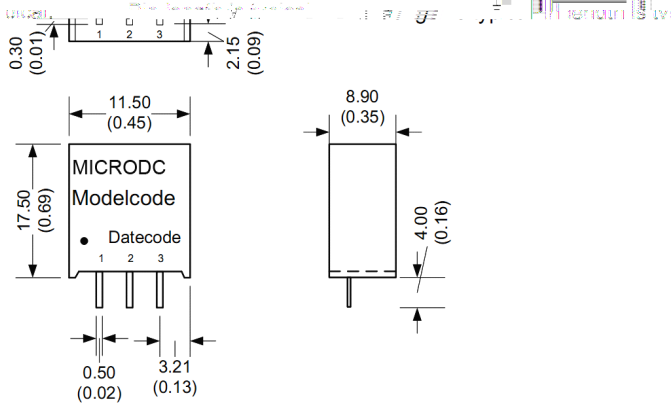


( )



### MECHANICAL DIMENSIONS

All dimensions are typical in millimeters (inches).  
Tolerance x.xx = +/- 0.30 (+/- 0.01)  
Specification may change without notice.



Pin	Pin	Connection
1	+ V	Input
2		GND
3	+ V	Output

### TUBE OUTLINE DIMENSIONS

