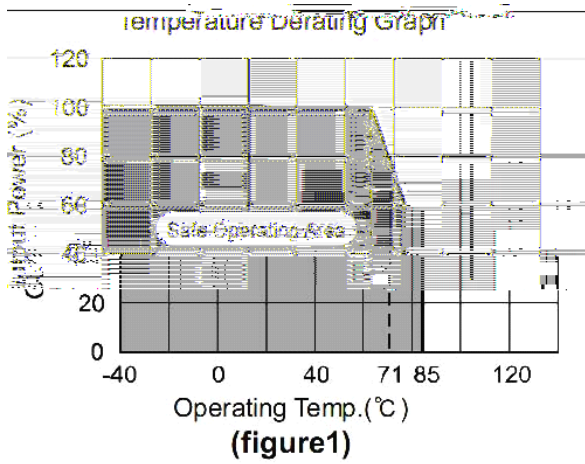


Product Program	

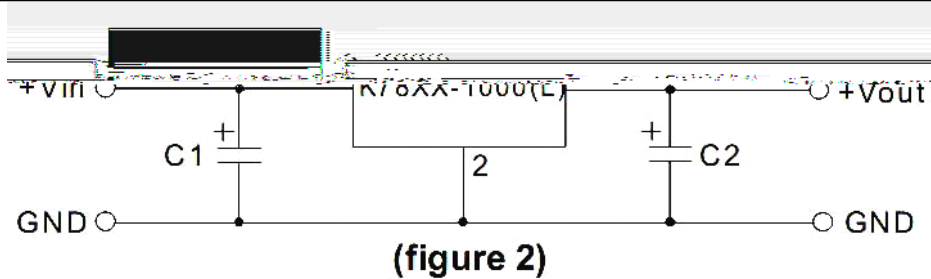
TYPICAL CHARECTERISTICS



EXTERNAL CAPACITOR TABL

Part Number	C1 (Ceramic capacitor)	C2 (Ceramic capacitor)
WRN7801-1000(B)	10 μ F/50V	22 μ F/6.3V
WRN781.8-1000(B)	10 μ F/50V	22 μ F/6.3V
WRN782.5-1000(B)	10 μ F/50V	22 μ F/6.3V
WRN7803-1000(B)	10 μ F/50V	22 μ F/6.3V
WRN7805-1000(B)	10 μ F/50V	22 μ F/16V
WRN786.5-1000(B)	10 μ F/50V	10 μ F/16V
WRN7809-1000(B)	10 μ F/50V	10 μ F/16V
WRN7812-1000(B)	10 μ F/50V	10 μ F/25V
WRN7815-1000(B)	10 μ F/50V	10 μ F/25V

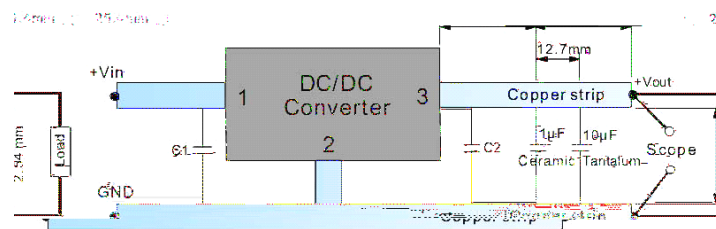
TYPICAL APPLICATION CIRCUIT



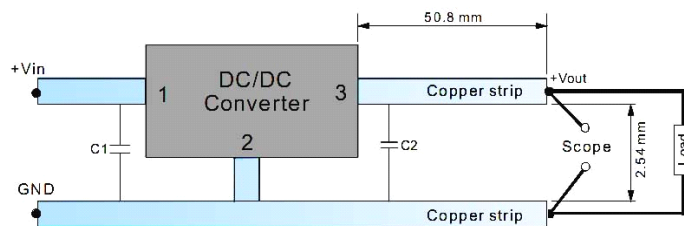
- C1 and C2 are required and should be fitted close to the converter pins.
 - The capacitance of C1, C2 sees external capacitor table, it can be increased properly if required, and tantalum or low ESR electrolytic capacitors may also suffice.
- No parallel connection or plug and play.

TEST CONFIGURATIONS (TA=25°C)

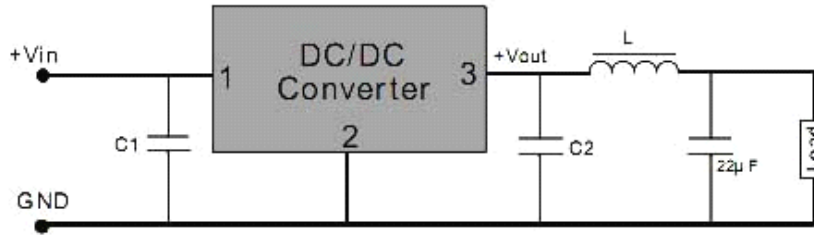
1 Efficiency and Output Voltage Ripple Test



2 Start-up and Load Transient Response Test



OUTPUT RIPPLE REDUCTION



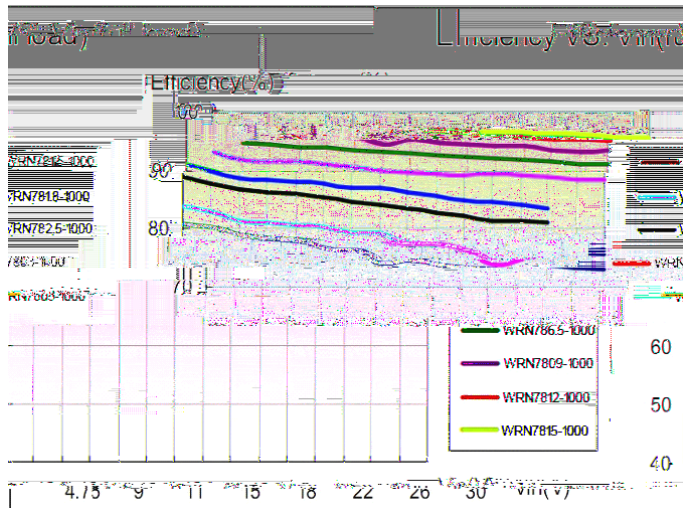
To reduce output ripple, it is recommended to add a LC filter in output port.

L: Recommended parameter 10µF~47µF.

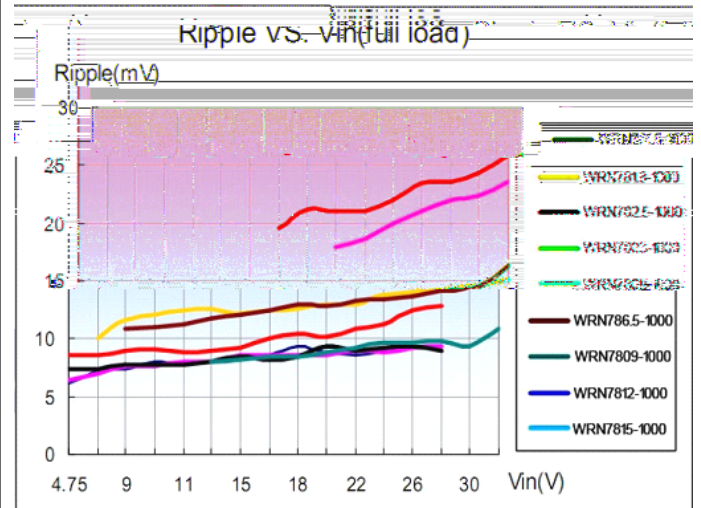
(figure 5)

OUTPUT RIPPLE REDUCTION

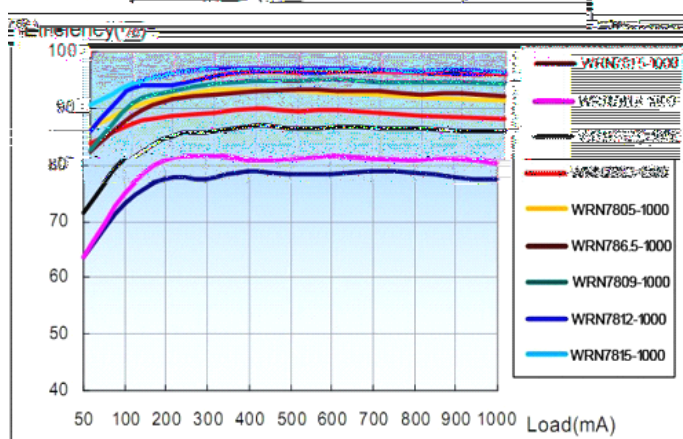
Efficiency



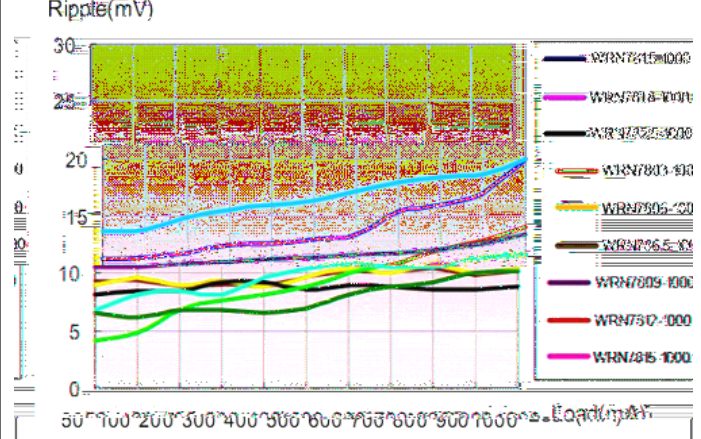
Ripple



Efficiency VS Load (Vin=Vin-nominal)

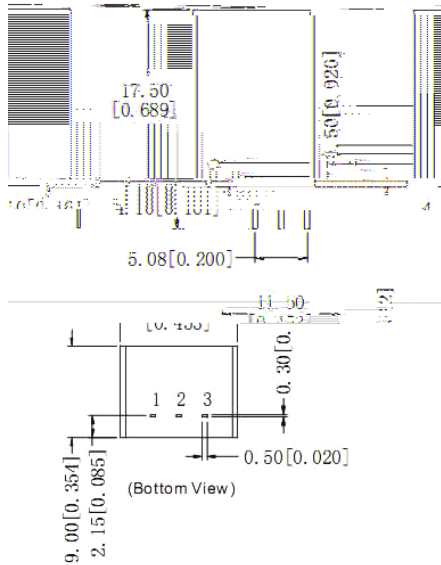


Ripple vs Load (Vin=Vin-nominal)



OUTLINE DIMENSIONS & FOOTPRINT DETAILS

MECHANICAL DIMENSIONS

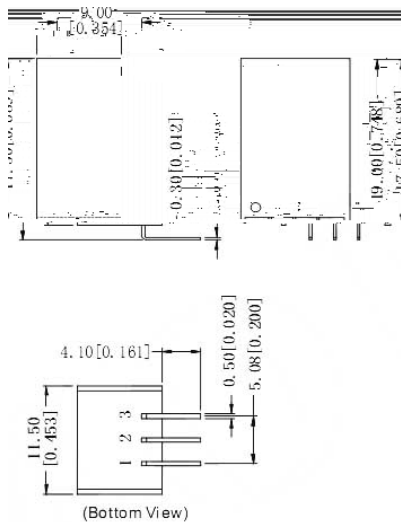


Note:

Unit:mm[inch]

Pin section tolerances: $\pm 0.10\text{mm}$ [$\pm 0.004\text{inch}$]

General tolerances: $\pm 0.25\text{mm}$ [$\pm 0.010\text{inch}$]



Note:

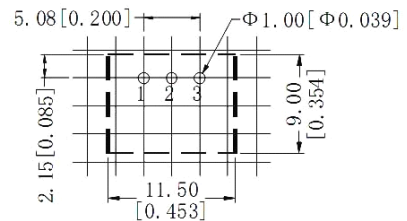
Unit:mm[inch]

Pin section tolerances: $\pm 0.10\text{mm}$ [$\pm 0.004\text{inch}$]

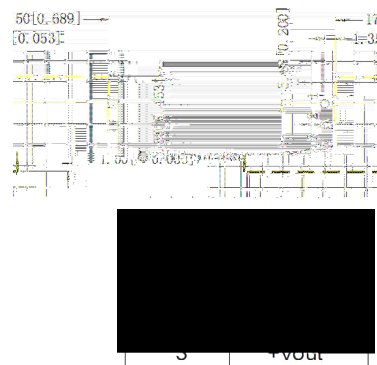
General tolerances: $\pm 0.25\text{mm}$ [$\pm 0.010\text{inch}$]

RECOMMENDED FOOTPRINT

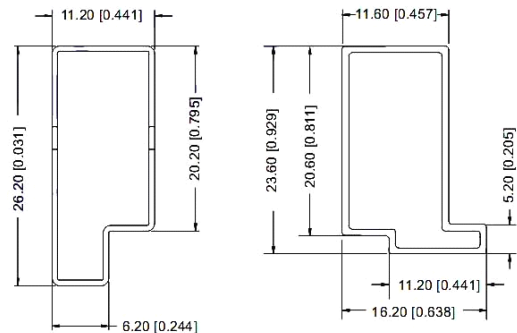
WRN78XX-1000



WRN78XX-1000B



TUBE



Note:

Unit :mm[inch]

General tolerances: $\pm 0.50\text{mm}$ [$\pm 0.020\text{inch}$]

L=530mm[20.866inch] Devices per tube quantity: 44pcs

L=220mm[8.661inch] Devices per tube quantity: 17pcs

Short tube inner packaging dimensions: L*W*H=255*170*80mm

Short tube outer packaging dimensions(with six inner packaging boxes):

L*W*H=375*280*270mm

Long tube inner packaging dimensions: L*W*H=580*200*100mm

Long tube outer packaging dimensions(with two inner packaging boxes):

L*W*H=600*215*220mm

Long tube outer packaging dimensions(with three inner packaging boxes):

L*W*H=600*215*325mm